

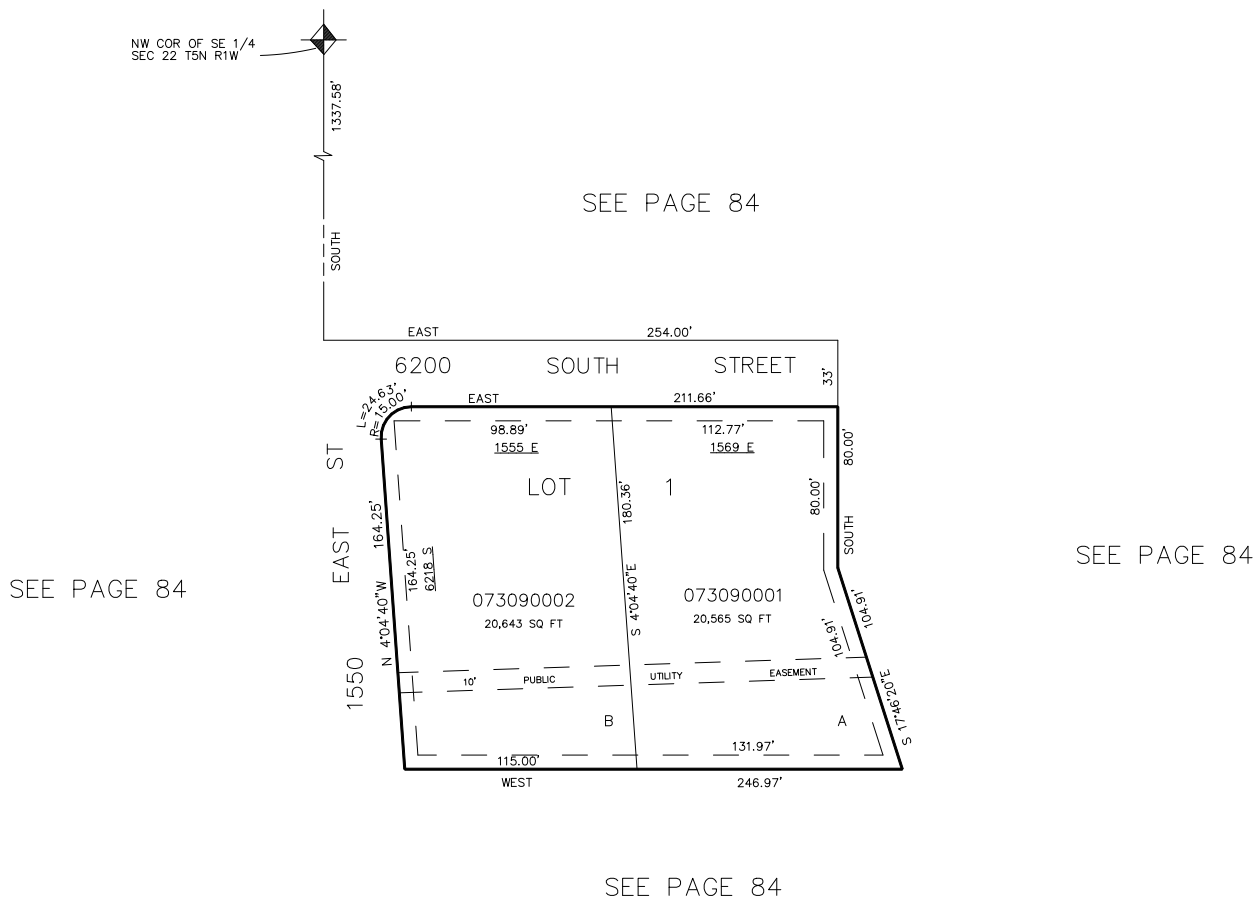
PART OF SE 1/4, SEC. 22, T.5N., R.1W., S.L.B. & M.
 2 LOT SUBDIVISION OF LOT 1
 HILL VIEW ACRES SUBDIVISION

309

IN WEBER COUNTY

TAXING UNIT: 54

SCALE 1" = 50'



7' UTILITY EASEMENT EACH
 SIDE OF PROPERTY LINES AS
 INDICATED BY DASHED LINES
 OR AS OTHERWISE SHOWN.

FOR COMPLETE ENG. DATA SEE
 ORIG. DEDICATION PLAT IN
 BOOK 28, PAGE 28 OF RECORDS.